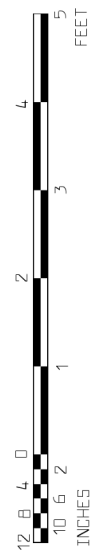
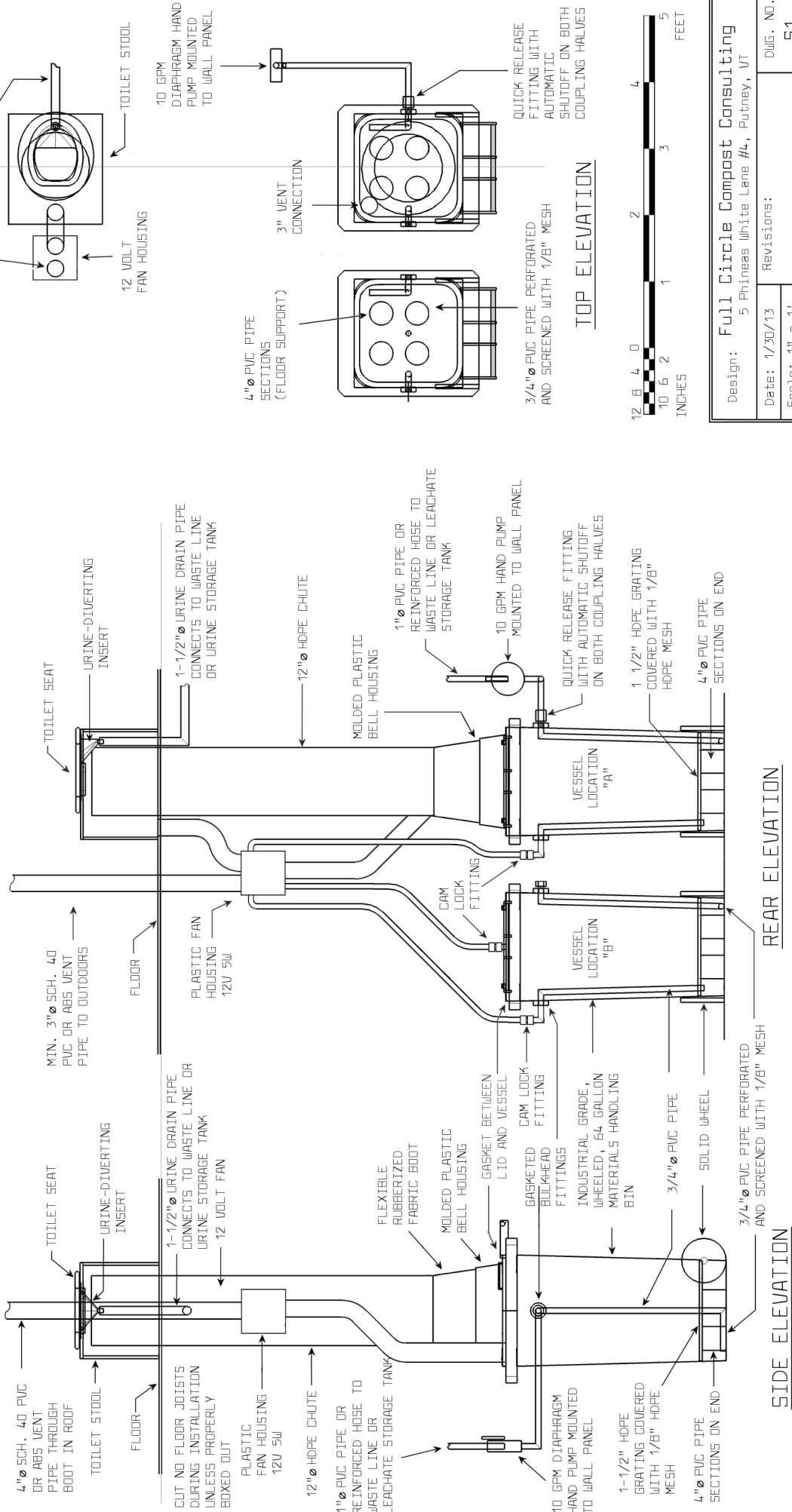


GENERAL NOTES:

- 1) COMPOST VESSEL SHOWN IS A SHAEFER 64 GALLON WHEELED MATERIALS HANDLING BIN (#6GMT64) OR EQUIVALENT.
- 2) 10 GPM LEACHATE PUMP SHOWN IS A BOSWORTH, MARINE-GRADE, HAND-OPERATED DIAPHRAGM BILGE PUMP, OR EQUIVALENT.
- 3) FAN SHOWN IS 12V WITH MINIMUM RATING OF 80 CFM IN OPEN AIR OPERATION.
- 4) IN THE COMMODE SHOWN, ALL SURFACES THAT HAVE THE POTENTIAL TO CONTACT WASTE ARE OF PLASTIC OR STAINLESS STEEL. OTHER MATERIALS THAT WILL NOT CONTACT WASTE OR MOISTURE FROM WASTE INCLUDE STEEL, ALUMINUM, AND COATED WOOD. THE SYSTEM IS COMPATIBLE WITH A URINE-DIVERTING OR NON-URINE-DIVERTING COMMODE. IF AN ALTERNATE COMMODE IS USED THAT HAS NO VENT CONNECTION, A BOOSTER FAN MAY BE REQUIRED.
- 5) THE VESSEL LID AT POSITION "A" INCORPORATES A BELL HOUSING AND FLEXIBLE BOOT THAT IS CONNECTED TO THE 12" PLASTIC CHUTE. THIS ALLOWS THE LID TO BE MOVED UP AND DOWN DURING VESSEL EXCHANGE WHILE PROVIDING AN AIRTIGHT CONNECTION BETWEEN THE CHUTE AND THE VESSEL DURING NORMAL OPERATION.
- 6) AIR FROM THE AIR SUPPLY/VENTILATION SYSTEM IS INJECTED INTO THE VESSELS THROUGH ONE OF THE SIDE PIPES AND INTO THE SPACE BELOW THE FLOOR GRATE. AIR THEN TRAVELS UPWARD THROUGH THE COMPOST UNTIL IT IS REMOVED THROUGH THE FITTING AT THE LID. THE AIR SUPPLY REMAINS CONNECTED AT ALL TIMES UNTIL BIN IS REMOVED FROM SYSTEM FOR COMPOST DISPOSAL.
- 7) IF VESSEL DOES NOT RECEIVE ADEQUATE RETENTION TIME AT POSITION "B" ADDITIONAL VESSELS AND AIR LINES CAN BE ADDED TO ACHIEVE ANY DESIRED RETENTION TIME. ALTERNATELY, THE VESSEL AT POSITION "B" CAN BE EMPTIED INTO A SECONDARY COMPOSTING CONTAINER FOR FURTHER RETENTION.
- 8) REGULAR MAINTENANCE TO BE PERFORMED INCLUDES THE ADDITION OF WOOD SHAVINGS THROUGH THE COMMODE AFTER EVERY FECAL ADDITION. IF A URINE-DIVERTING COMMODE IS NOT USED, EXCESS LIQUID SHOULD BE PUMPED OUT WEEKLY USING THE WALL-MOUNTED PUMP. CONDUCT MONTHLY INSPECTIONS OF THE VESSEL AT LOCATION "A" TO DETERMINE WHEN TO SWITCH THE VESSELS. PROJECTED TIME TO FILL A VESSEL IS 6-12 MONTHS DEPENDING ON USAGE.



Design: Full Circle Compost Consulting 5 Phineas White Lane #4, Putney, VT	
Date: 1/30/13	Revisions:
Scale: 1" = 1'	DWG. NO. 51
Project #114	REV. 0